



Women
With
Disabilities
Australia
(WWDA)

The Our Site project

An Easy Read summary



How to use this document



Women With Disabilities Australia (WWDA) wrote this document. When you see the words 'we' or 'us,' it means WWDA.



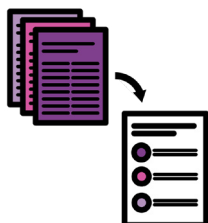
We have written this document in an easy to read way. We use pictures to explain some ideas.

Bold
Not Bold

We have written some words in **bold**. This means the letters are thicker and darker.



We explain what these words mean. There is a list of these words on page 18.



This Easy Read document is a summary of another document. This means it only includes the most important ideas.



You can find the other document on our website at www.oursite.wwda.org.au/about/about-us



You can ask for help to read this document. A friend, family member or support person may be able to help you.

What's in this document?

How to use this document	2
About Our Site	4
How we made Our Site	8
The women who helped us	11
The future of Our Site	14
Word list	18



About Our Site



Our Site is a new website created:

- by women and girls with disability
- for women and girls with disability.



It gives women and girls information and resources to help them:

- learn about their rights
- stand up for their rights
- learn about and connect with other women with disability.



Our Site is managed by WWDA.



WWDA is run by women with disability.



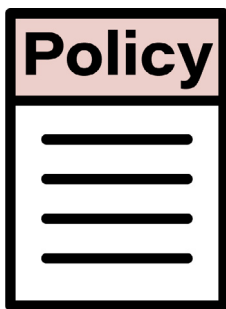
WWDA is a national **advocacy organisation**.



This means we stand up for the rights of women and girls with disability in Australia.



We also talk to government and help them make **policies** to better support women with disability.



Policies are government plans for how to do things.



Our Site was a very important project for us.



We knew there wasn't enough information out there for women and girls with disability about issues that affected their daily lives.

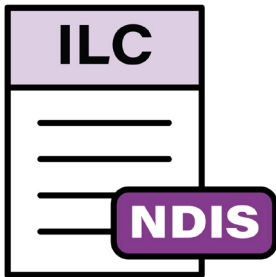


We worked closely with other women with disability to make Our Site.





We paid for Our Site with money from the **Information, Linkages and Capacity Building (ILC) Program**.



The ILC Program is managed by the National Disability Insurance Scheme (NDIS).



It supports projects that help people with disability connect to their community.



We launched the main Our Site website in March 2020.



We launched the Easy Read Our Site website in July 2020.

How we made Our Site



We started making Our Site in June 2018.



We wanted the website to be high quality.

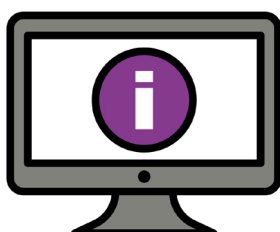
This meant it had to:



- be easy to understand



- be easy to use



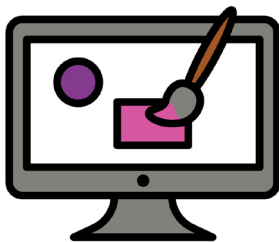
- include information that women and girls with disability need



- include information that was true



- support women and girls with disability to deal with issues in their daily lives



- have a nice design



- be **inclusive** – if something is inclusive, everyone can take part



- be **accessible**.

When something is accessible, everyone can use it. This might be:



- a place or a building
- transport
- a service
- information
- a website.



So far, the women and girls with disability who have used Our Site say it achieves all these goals.



They also like that the website has lots of real stories from other women with disability.

They said the stories made them feel more connected to:



- their community
- other women with disability.

The women who helped us



We made Our Site with the help of over 100 women with disability from around Australia.

Women with disability helped by:



- helping to lead and guide the project
- sharing their ideas and suggestions
- helping to write content
- sharing their stories
- testing the website and telling us what they thought.

We made sure that women with disability felt:



- ok about sharing their ideas



- that their ideas were important



- that their ideas would make a difference



- respected



- safe.



Including women with disability in the Our Site project helped us make a better website for all women with disability.



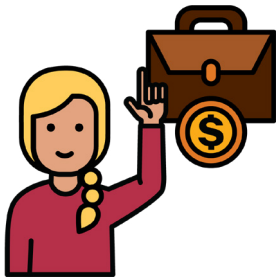
The women with disability who helped us said they felt proud about being part of the project.



They liked meeting new people and making new friends with other women with disability.



They also said taking part in the project gave them more confidence.



This has helped some women in other parts of their lives, such as in their work.

The future of Our Site



We want to make sure women and girls with disability keep getting the information they need from Our Site.

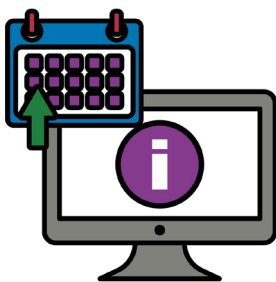
We'll make sure we keep:



- working to make Our Site better



- getting help from women with disability



- updating information on Our Site



- telling people to visit Our Site.



There is also more work we want to do on Our Site.

We want to:



- make Our Site even more accessible



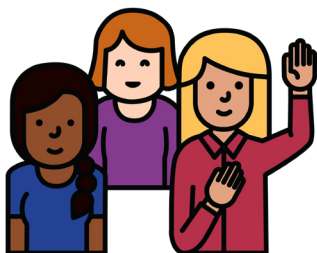
- use Our Site to connect women with disability to each other



- help women with disability grow their skills



- use Our Site to change community **attitudes** – what people think, feel and believe.



As an organisation, we want to share our experience working with women with disability.



We hope this will encourage other organisations to include people with disability in their projects.



Word list

Accessible

When something is accessible, everyone can use it. This might be:



- a place or a building
- transport
- a service
- information
- a website.



Advocacy organisation

Organisations that stand up for the rights of women and girls with disability in Australia.



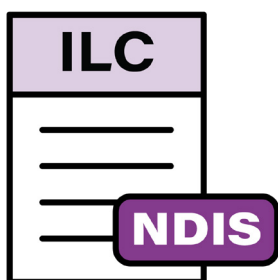
Attitudes

What people think, feel and believe.



Inclusive

If something is inclusive, everyone can take part.



ILC Program

The ILC Program supports projects that help people with disability connect to their community.



Policies

Policies are government plans for how to do things.



The Information Access Group created this Easy Read document using stock photography and custom images. The images may not be reused without permission. For any enquiries about the images, please visit www.informationaccessgroup.com. Quote job number 3555-A.



Women
With
Disabilities
Australia
(WWDA)