



Women
With
Disabilities
Australia
(WWDA)

Telling us what you think about WWDA LEAD

An Easy Read guide



How to use this guide



Women With Disabilities Australia (WWDA) wrote this guide.

When you see the word 'we', it means WWDA.



We wrote this guide in an easy to read way.

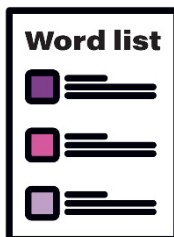
We use pictures to explain some ideas.

Bold

We wrote some words in **bold**.

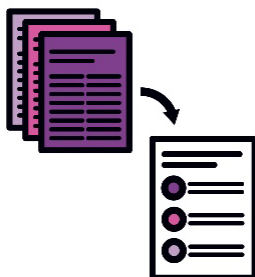
Not bold

This means the letters are thicker and darker.



We explain what these words mean.

There is a list of these words on page 19.



This is an Easy Read summary of another guide.

This means it only includes the most important ideas.



You can find the other tool on our website.

wwda.org.au/home/wwda-lead-monitoring-evaluation-and-learning/



You can ask for help to read this survey.

A friend, family member or support person may be able to help you.



We recognise First Nations peoples as the traditional owners of our land – Australia.

They were the first people to live on and use the:



- land



- waters.



This guide includes photos of Aboriginal and Torres Strait Islander people.

It may contain images of people who have passed away.

What's in this guide?

What is this guide about? 5

Why is your feedback important? 9

How will we use the information you share with us? 11

How will we store your information? 18

How will we protect your information? 19

Word list 20

Contact us 21

What is this guide about?



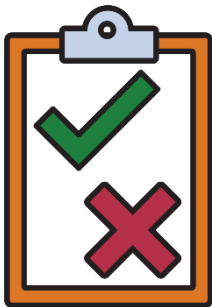
We want to find out how well our WWDA LEAD program went.

We call it our LEAD Project.



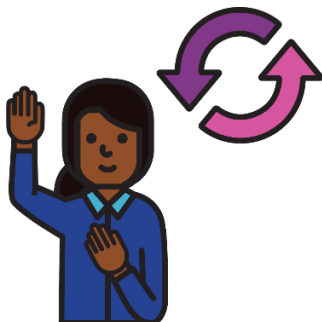
We will look at what:

- went well
- could be done better.



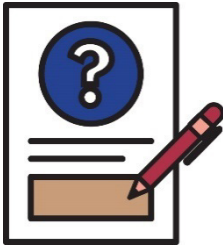
And what we should:

- do more of
- stop doing.

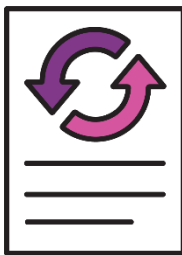


We also want to know how you think you've changed since you took part in our LEAD Project.

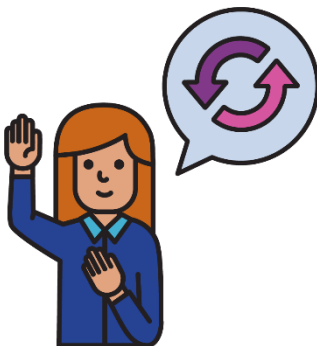
You can do this by:



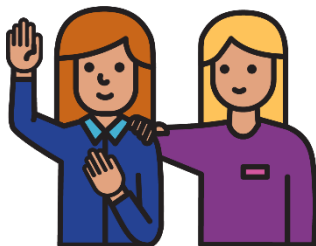
- filling out our surveys



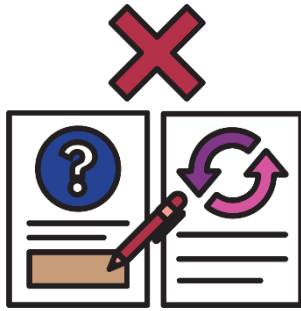
- sharing your Story of Change.



In this guide, we call it your story.



Your story is about how WWDA LEAD helped you become a better leader.



You don't have to:

- fill out our surveys
- share your story.



You can still be a WWDA member.

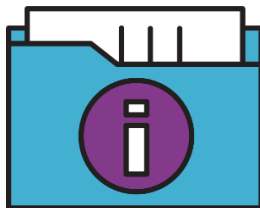
In this guide, we explain how we will:



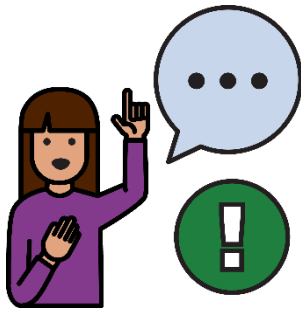
- protect your information



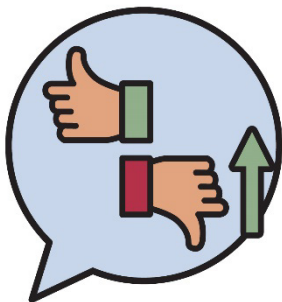
- use your information



- store your information.

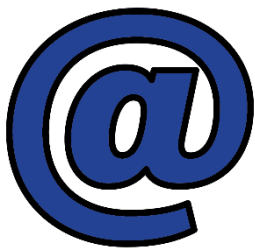


We will also share why your **feedback** is important.



When you give feedback, you tell someone what they:

- are doing well
- can do better.

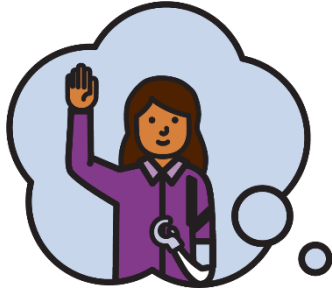


If you have any questions, you can email Carolyn Fromhader.

carolyn@wwda.org.au

Why is your feedback important?

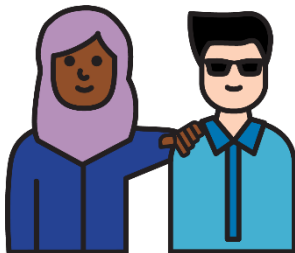
We hope that taking part in our LEAD Project has changed how you:



- think about leadership



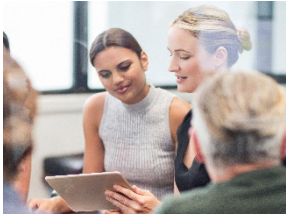
- think about yourself as a leader



- behave as a leader.



We hope that sharing your feedback will help you to think about these changes.



Your feedback will help us to support **diverse** women and girls to be leaders.

When something is diverse, lots of different people take part in it.

This includes people with different:



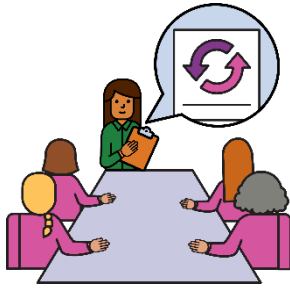
- ages
- abilities
- backgrounds
- beliefs.



Your feedback also helps us to share our work with:

- our members
- the organisations who support us.

How will we use the information you share with us?



We will run sessions with our team to understand:

- your story
- your survey answers.



We will write a report sharing what we've learned.

It will be called our Project Report.

We will share our Project Report with:



- other people who have taken part in our LEAD Project



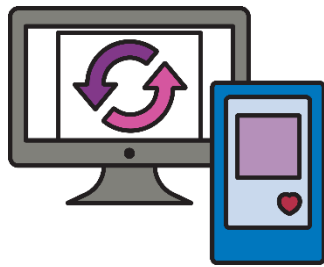
- our staff



- our Board



- the organisations who support us.



We will share our Project Report on our website.

And we might share it on our social media.

We might use the information in our Project Report to help us:

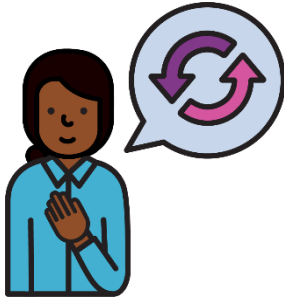


- get more support from other organisations



- speak up for diverse women and girls with disability.

Using your story



You can share your story about how you think you've changed since you took part in our LEAD Project.



You can do this by using the tools that we will email to you.

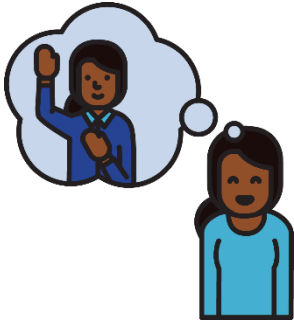


We will explain how to use each tool.

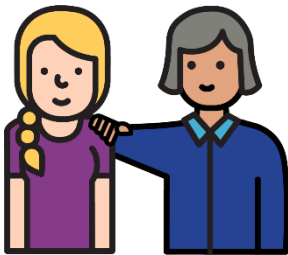
The tools help you to think about how our LEAD Project has changed how you:



- think about leadership



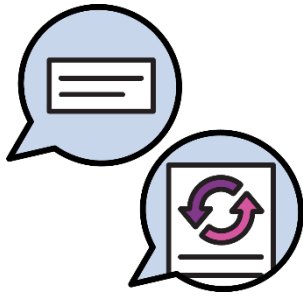
- think about yourself as a leader



- behave as a leader.



We might share your story in our Project Report.



We might include:

- part of your story
- your whole story.

We will look at everyone's stories to help us understand:



- what experiences people shared



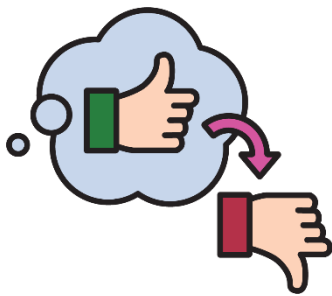
- how people experienced things differently.



We won't share your name with your story unless you say we can.



And you can choose whether we include other personal information with your story.



It's okay if you change your mind about sharing your story.

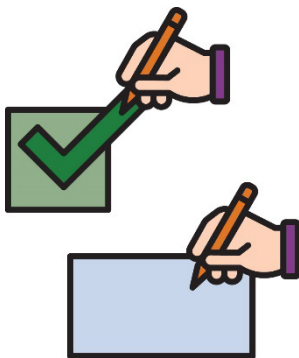


If you change your mind, you need to tell us before we share our Project Report.

Using your survey answers



We will also use your survey answers in our Project Report.



This includes when you:

- tick a box
- or
- write your answers in a box.



We will share your survey answers in ways that are easy to understand.

This includes using pictures.



We will look at everyone's answers to see if people experienced the same changes during our LEAD Project.

How will we store your information?



We will store your information in a safe place.



Some people will be able to see your information.

This includes:

- our team
- other people who have shared their story.



We will delete your information after 7 years.

How will we protect your information?



We will keep your information:

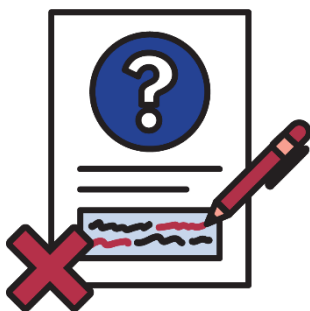
- safe
- private.



We won't share your information unless you say we can.



But if you share any personal information in our surveys, we might be able to work out who you are.



Once you give us your feedback, we can't make changes to your answers.

This is to help keep your answers private.



You can find out more about how we will protect your information on our website.

www.wwda.org.au/privacy

Word list

This list explains what the **bold** words in this guide mean.

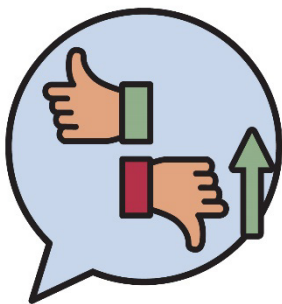
Diverse

When something is diverse, lots of different people take part in it.

This includes people with different:



- ages
- abilities
- backgrounds
- beliefs.



Feedback

When you tell someone what they:

- are doing well
- can do better.

Contact us



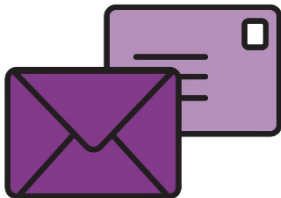
You can call us.

0438 535 123



You can send us an email.

officeadmin@wwda.org.au



You can write to us.

Women With Disabilities Australia

PO Box 407

Lenah Valley

Tasmania 7008



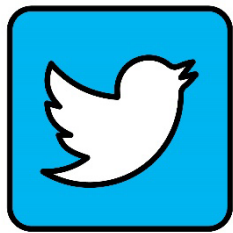
You can visit our website.

www.wwda.org.au



You can follow us on Facebook.

www.facebook.com/WWDA.Australia



You can follow us on Twitter.

www.twitter.com/WWDA_AU

Twitter is also called X.



The Information Access Group created this Easy Read guide using stock photography and custom images. The images may not be reused without permission. For any enquiries about the images, please visit

www.informationaccessgroup.com. Quote job number 5394-C.