



Women  
With  
Disabilities  
Australia  
(WWDA)

# Share your story

## Tool 3: Making art to show your change

An Easy Read version



## How to use this tool



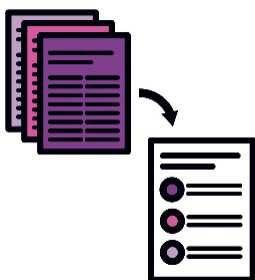
Women With Disability Australia (WWDA) wrote this tool.

When you see the word 'we', it means WWDA.



We wrote this tool in an easy to read way.

We use pictures to explain some ideas.



This is an Easy Read version of another tool.



You can find the other tool on our website.

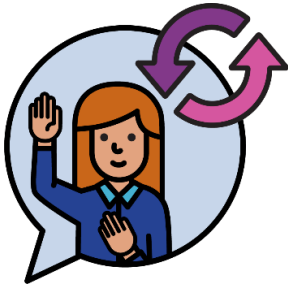
[wwda.org.au/home/wwda-lead-monitoring-evaluation-and-learning/](http://wwda.org.au/home/wwda-lead-monitoring-evaluation-and-learning/)



You can ask for help to read this tool.

A friend, family member or support person may be able to help you.

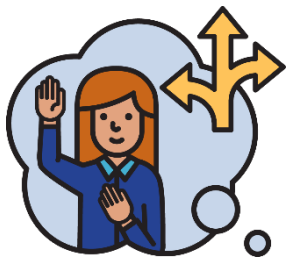
## About this tool



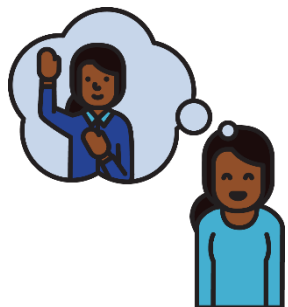
We would like you to share how you think you've changed since you took part in WWDA LEAD.

We call it our LEAD Project.

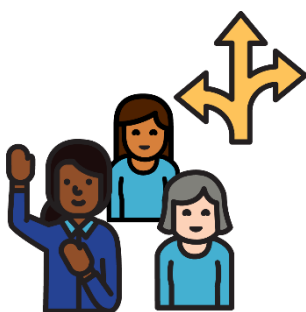
We would like you to share:



- how you think about leadership differently



- how you think about yourself as a leader



- how you behave differently as a leader.



You can share these changes by making a piece of art that shows how you have changed.

## Making a piece of art

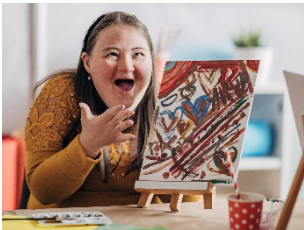
You can make:



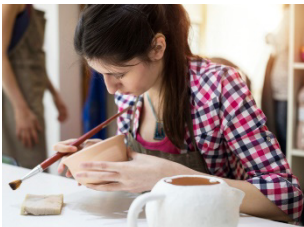
- a poem



- a collage



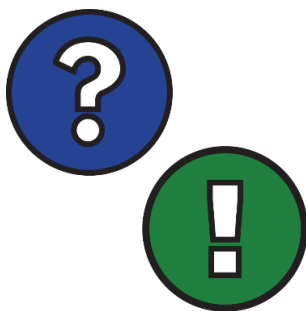
- a painting



- anything creative.

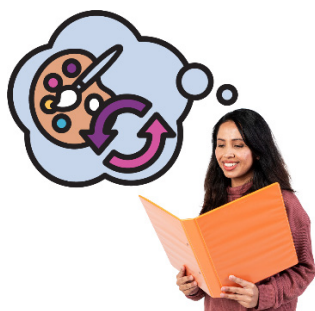


You also need to write a 'statement' to go with your art.

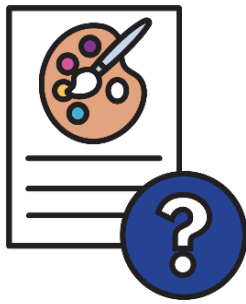


Write about:

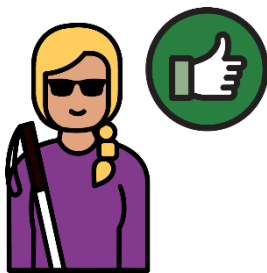
- what you've chosen to make
- what the art means to you.



This will help us understand how your art shows how you have changed.



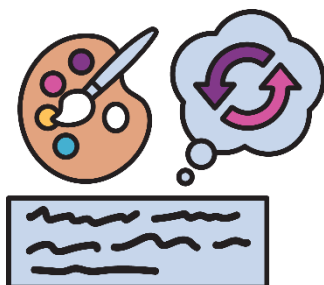
If you make art that is for people to look at, please also write a statement saying what it is.



This is so people who are blind or have low vision can enjoy it too.



We would also like you to think about how our LEAD Project helped you change.



You can include this in:

- your art
- your statement.

## How to send this tool back to us



You can email us this tool once you've completed it.

**[lead@wwda.org.au](mailto:lead@wwda.org.au)**



You can also send us this tool in the mail once you've completed it.

Women With Disabilities Australia

PO Box 407

Lenah Valley

Tasmania 7008



The Information Access Group created this Easy Read document using stock photography and custom images. The images may not be reused without permission. For any enquiries about the images, please visit **[www.informationaccessgroup.com](http://www.informationaccessgroup.com)**. Quote job number 5394-C.